



Inside This Issue . . .

Interim Board . . .

Overview...Agenda...Registration...Promotion

Leadership @ Large . . .

How to Succeed in New Surroundings

News from . . .

the Officers...the Committees...the Locals...

THE KENTUCKY KCARDINAL

KENTUCKY FEDERATION OF BUSINESS & PROFESSIONAL WOMEN'S CLUB, INC.

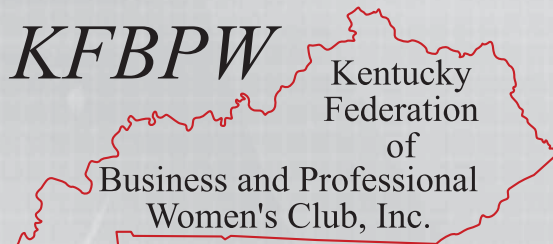
VOLUME 83 • ISSUE 2 • Fall 2011

KFBPW

Kentucky
Federation
of
Business and Professional
Women's Club, Inc.

THE KENTUCKY CARDINAL

KENTUCKY FEDERATION OF BUSINESS & PROFESSIONAL WOMEN'S CLUB, INC.



2011-2012 KFBPW Executive Committee

President

Suzanne Forshee
 121 Hunters Crossing
 Franklin, KY 42134
 Office: 270-781-6400
 Cell: 270-776-3773
 Fax: 270-438-4025
 E-Mail: suzforshee@gmail.com

President-Elect

Jerilyn Hippler
 1219 Autumn Oaks Dr
 Franklin, KY 42134
 Cell: 270-776-3238
 Fax: 888-398-8769
 E-Mail: jerilyn.hippler@gmail.com

Vice President

Amanda Ishmael
 P.O. Box 773
 Cynthiana, KY 41031
 Home: 859-235-8347
 Office: 859-472-7000
 Cell: 859-588-0719
 E-Mail: sharpmissishee@hotmail.com

Recording Secretary

Millie Lotter
 420 Westfield Lane
 Henderson, KY 42420
 Home: 270-827-2677
 Cell: 270-823-2103
 E-Mail: mdlotter@insightbb.com

Treasurer

Diane Crony-Turner
 26 Harton Place
 Hopkinsville, KY 42241
 Home: 270-885-1425
 Office: 270-886-6341
 Cell: 270-881-0265
 Fax: 270-885-6078
 E-Mail: diane.c@pacs-ky.org

Parliamentarian

Patti Fallin
 2729B Green River Road
 Henderson, KY 42420
 Home: 270-827-8741
 Office: 270-844-6009
 Cell: 270-860-5957
 E-Mail: pfallin@insightbb.com

Executive Assistant

Cathy Hughes
 610 Kerry Court
 Franklin, KY 42134
 Cell: 270-791-3688
 Office: 270-745-1771
 Fax: 270-467-1277
 E-Mail: highesj@bellsouth.net

Kentucky Cardinal Advertising

The Kentucky Cardinal accepts advertising but reserves the right to refuse to publish any and all ads submitted. Rates are for camera-ready copy. Mail or email ads to *The Kentucky Cardinal* advertising editor. All ads are to be paid in advance. Checks should be made payable to KFBPW with *The Kentucky Cardinal* in the memo.

Full Page.....	\$150
Half Page.....	\$85
Quarter Page.....	\$60
Eighth Page.....	\$35

Identical ad run in any three issues will receive a 10% discount.

Deadlines for the Kentucky Cardinal

July 1 - September 15 - December 1 - March 15

inside this issue . . .

President's Message.....	3
Leadership@Large.....	4
Officer Report.....	5
Committee Report.....	5&6
Local News.....	7&8
Interim Board Overview.....	9
Interim Board Agenda.....	10
Interim Board Registration Form.....	11
Advertising.....	12-15

Kentucky Cardinal Staff

Editor

Patti Fallin
 2729B Green River Rd.
 Henderson, KY 42420
 Home: 270-827-8741
 Work: 270-844-6009
 Cell: 270-860-5957
 Fax: 270-844-6023
 Email: pfallin@insightbb.com

Graphic Designer

Jan Embry
 8057 Hwy. 351
 Henderson, KY 42420
 Cell: 270-860-0394
 Email: janembry@live.com

Advertising Co-Editor

Sharron Belcher
 714 W. Main St.
 Princeton, KY 42445
 Home: 270-365-5447
 Cell: 270-625-4916
 Email: sharronlb@bellsouth.net

Advertising Co-Editor

Bettie Wallace
 11240 S. Jefferson Street
 Princeton, KY 42445
 Home: 270-365-2324
 Cell: 270-625-0341
 E-Mail: bettiwallace1781@att.net

President's Message



President, Suzanne Forshee

It's hard to believe that fall is already upon us, time just passes so quickly. Your EC has been working diligently to ensure an informative and fun Interim Board.

I hope that you'll take a few minutes now to go ahead and complete your registration form and make your room reservations for the 90th Interim Board meeting to be held at Barren River Lake State Resort Park in Lucas, KY on November 18th and 19th. (Please note the new date)

We have worked very hard to keep the costs as conservative as possible to hopefully allow more members to attend. If you register by October 18, the full conference fee will be \$55.00; after October 18th the fee will be \$65.00. Rooms will be blocked until October 18th. Be sure to identify your affiliation with KFBPW to receive the special rate of \$71.95 prior to tax.

We've heard your concerns over the start times of the state meetings, and we have set the start time for 3pm to allow for greater attendance. To encourage more participation in the Professional Development program we will be providing two modules of training beginning at 5pm. In addition, program CDs will be available to locals that need a copy. This will be an excellent opportunity for everyone to gain a greater knowledge of the program and take it back to be utilized in your local.

Friday night will conclude with a Fundraising event for the Kentucky BPW Foundation. The Board of Trustees has planned a few surprises for those in attendance and it sounds like it will be a fun and exciting night.

We have included a breakfast buffet in the registration fee for this year. After a delicious breakfast, we will conduct the business of the Federation and wrap up the day with a Membership and Mentoring seminar. We will finish and have everyone on the road back to your family by noon on Saturday.

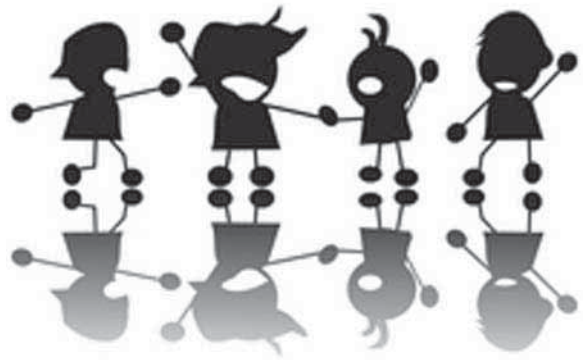
I would encourage each Local to have at least one representative at Interim Board. State meetings are an excellent opportunity to network with other KFBPW members from around the state and build lasting friendships.

Awards for Kentucky Professional Women's Week or Month will be given out during State Conference in June. Each local has the choice to celebrate in October or during the month of March or for the very industrious you can do both.

Looking forward to seeing each of you at Interim Board!

Suzanne

How to Succeed in New Surroundings



School is back in session. Over the past few weeks, millions of children have grabbed their backpacks and lunchboxes, boarded the bus, arrived at school, and walked into a classroom full of new faces. During the first day of school, a student's mind buzzes with questions:

- Who will be my friends?
- Does my teacher seem nice?
- Are classes going to be fun?

In asking the questions, each student, in his or her own way, attempts to figure out how to succeed (academically and socially) in new surroundings.

Similar questions run through a leader's mind when stepping into a new environment. The new teacher entering the classroom, the incoming sports coach taking over a team, and the freshly promoted manager arriving to the office—each hopes to excel in a new role and wonders about the best way to start off well.

The teacher prepares a lesson plan, the coach plans innovative drills and designs a playbook, and the manager fine-tunes ideas to streamline operations and boost sales. Focusing on what they will do as new leaders is surely wise and necessary, but it's insufficient and secondary. A new leader's primary objective ought to be building trust with the people they will lead.

Trust: The Foundation of Leadership

Trust is an attitude that allows people to rely on, and place confidence in, other people. By establishing trust, leaders introduce a degree of stability and certainty into the chaos of life. Trust acts as emotional glue, holding together leaders and followers. "Do my people trust me?" is the central question of leadership, and leaders must continually monitor the level of trust that exists on their team. In the words of Warren Bennis, "[Trust] cannot be acquired, but must be earned. It is given by coworkers and followers, and without it, the leader can't function."

Prerequisite to Earning Trust: Self-Confidence

A leader must possess a measure self-confidence to inspire the trust of co-workers. The leader who wavers indecisively and emanates self-doubt has no chance to win the devoted backing of followers. Knowing oneself, one's gifts and faults alike, is the starting point for connecting with others. Leaders, who are comfortable in their identity, and secure in their abilities, put others at ease and invite their trust.

Building Trust

1) Show Respect

People are drawn to those who make them feel valuable. Leaders win trust when they expect the best from their people and treat them as worthy of respect. In a sense, followers are like mirrors: they reflect back the level of trust that's shown to them.

2) Be Dependable

People trust what has proved to be reliable over time. They take note of a leader's readiness to sacrifice for their benefit and of his or her willingness to work hard on their behalf. Once they're convinced that the leader is on their side, fighting for them, people naturally extend trust.

3) Speak Truthfully

Being truthful involves the twin components of consistency and honesty. A leader demonstrates consistency by making words and action compatible. Perhaps nothing evaporates trust faster than when leaders break promises. As Charles Horton Cooley observed, "If we divine a discrepancy between a man's words and his character, the whole impression of him becomes broken and painful; he revolts the imagination by his lack of unity, and even the good in him is hardly accepted."

Honest leaders speak in a sincere, forthright manner. They mean what they say, and they refuse to shy away from the truth—even when it's uncomfortable. Leaders help people get past the discomfort of painful truths and help them move toward decisions that improve their situation and bring growth. In the long run, people trust and appreciate straight-talkers more than sweet-talkers.

Copyright 2011 The John Maxwell Company. Articles may not be reprinted or reproduced without written permission from The John Maxwell Company, except for brief quotations in critical reviews or articles.



Officer Report

Amanda Ishmael
Vice President

Hello! I hope you all are well and have survived the last few weeks of summer and the start of school!

I am looking forward to seeing everyone at Interim Board in November. During the weekend, I would like to meet with the Regional Leadership (Director, Assistant Director, Secretary and Treasurer) along with a representative from each regional meeting host club (Franklin, Fort Harrod and Middlesboro). There will be a small presentation and a work session. That way you can meet with each other (if you haven't already!) and start the dialogue on getting things started for the Regional Meeting. I will also be there to help in any way that I can.

If I don't see you at Interim Board, I hope you have an enjoyable holiday with the ones you love.

Diane Croney-Turner
Treasurer

Greetings! To date we have 13 locals who have paid the \$10.00 conference dues, 9 locals who have paid the \$25.00 liability insurance premium, and 3 locals who have purchased Cardinal advertising ads.

If you need an invoice for the conference dues or liability insurance premium, visit the KFBPW website at (www.bpw-ky.org). For Cardinal advertising, send the ad information to Patti Fallin and the payment to KFBPW Treasurer Diane Croney-Turner. We are requesting all local conference dues for 2011-2012 be paid by November 1, 2011.

All locals are asked to contribute the cost of a full page ad which is \$150.00 per year. This is used to supplement your dues amount for the cost of publishing the Kentucky Cardinal magazine. Ask your members or your community businesses to help with the cost. A full page can be made up of 8 to 12 business cards, 6 business cards for a half page, or two business cards for a quarter page. Then the cost will be split among the contributors for a lesser cost than a typical business card ad. Or ask an area business to submit a full page ad. The club does not have to do it all themselves.

Dues: If you have members who have paid their dues and are not showing up on the membership report, contact me at (diane.c@pacs-ky.org) or Millie Lotter at (mdlotter@insightbb.com). Mail all dues with the proper forms to KFBPW, c/o Diane Croney-Turner, Treasurer, 26 Harton Place, Hopkinsville, KY 42240. I will forward all information to Millie Lotter, Database Manager. The proper forms are available on the KFBPW website home page and they ensure the proper and complete information is obtained from the local organization.

If anyone has questions, please feel free to contact me!

Committee Report

Aspiring Professional
Cathy Hughes, Chair

Ladies, with National Business Women's Week coming up very shortly, now is a great time to get an Aspiring Professional program started in your local organization. March is Women's History month and would also be a great time to have a program. Since March is really close to the regional and state meetings, your candidate can stay in the swing of interviewing and presenting their speech.

Topics have been chosen and are on the state website with updated guidelines. The revised guidelines give new criteria for selecting judges. This is a very important part of your program, so be sure to check out our suggestions and criteria to make your program a huge success.

With a successful program you can grow your membership with younger members who can start recruiting their friends. It is also a great way to start a mentoring program by pairing your candidate with a more experienced member to help them with their interviewing skills, speech preparation and educating them on the benefits and joys of BPW.

I am here if you have any questions. Good luck with your programs and I hope to see two (2) candidates from each region at State!

Kentucky Foundation
Debrah Pierce, Chair

Members of the Kentucky Business and Professional Women's Foundation Board of Trustees look forward to seeing everyone at Interim Board in November!

The KFBPW Interim Board Friday evening "BPW Kentucky Foundation Silent Auction Fund Raiser" will be a Monte Carlo Night. I would like to thank Brownie Bennett and Franklin BPW for helping to organize the event. A costume contest will be held as a part of the evening's event. So.....come dressed in your best Monte Carlo themed attire! All KFBPW Local Organizations are asked to bring TWO auction items or a Christmas themed gift basket for the auction.

During these hard times, our support is needed to assist those women who have a financial need as they return to school to make a better life for their families. If you know of a deserving woman who needs tuition assistance, please encourage them to submit their application. Scholarship grant applications are due by October 30th and should be sent to Joanne Story, Scholarship Chair. The Scholarship Grant Application can be found on the KFBPW Website (www.bpw-ky.org).

Promise Campaign Contributors were recognized during the 2011 KFBPW State Conference. You are asked to consider becoming a Promise Campaign Contributor. 2011-2012 Promise Campaign donors will be recognized at the 2012 State Conference in Bowling Green, KY. If you would like more information about the Promise Campaign please contact me at piercedv@aol.com or Joanne Story at joanne.story@kctcs.edu.

Committee Report



Bylaws

Beth Moore, Chair

The Kentucky Federation of Business & Professional Women Bylaws and Policy documents are both posted on the KFBPW website (www.bpw-ky.org). The Model Local Organization Bylaws are also there. Please go there, print, and review those documents. All of the documents are in Word format. I suggest that each local organization use a Word format for their local bylaws documents as well.

I would like to express my appreciation to my appreciation to my committee members - Betty Hedges, Debrah Pierce, Janis Turner and Mimi Becker - for the work ahead on the Bylaws Committee.

This is an important task. I certainly know how busy all of the members are already with BPW-related jobs and their regular jobs as well. The members will review current bylaws and policies and make recommendations about future amendments/revisions.

Contact me with suggestions related to the bylaws. My phone number is (270) 824-8610. My email address is beth.moore@kctcs.edu. I look forward to seeing each of you at the Interim Board Meeting at Barren River State Resort Park in November!

Spirit of Women Mentoring Program

Joanne Story, Mentoring Chair

Your local BPW Club has a wonderful opportunity to implement the Spirit of Women Mentoring Program. We have the responsibility of sharing our knowledge, skills and understanding by mentoring those who are new to our sisterhood.

The Spirit of Women Mentoring Program is posted on the KFBPW website. It becomes clear that MENTORING WOMEN, BY WOMEN and FOR WOMEN is a valuable tool to career development, club success and the future of BPW.

What is mentoring?

It's a way to form a relationship with women to accomplish shared goals to make a connection between mentor and the mentee to help prepare them for success in our great organization. Our MISSION is to mentor women for like-long success, through the BPW Sisterhood, Advocacy, Education and Career and Officer Shadowing. The bond of cooperation and support must be established. Our GOAL is to help prepare mentees to succeed in business, their professions and BPW. Our PRIORITIES are to provide business and professional role models to increase opportunities for career development through the BPW. We must become creative in the ways we mentor and retain members. We must ask questions, obtain feedback and learn to apply new techniques in networking.

Please contact me if you need my assistance! -

Joanne.story@kctcs.edu

Membership

Janis Turner, Chair

I hope every local is planning a membership drive this year. It's the best way to get the word out about the benefits of membership with this great organization. If you are as passionate as I am about B&PW and I know that you are; why not share with your friends.

We are currently around 505 members. Let's all try to invite a guest every month or at least every other month. I think you will be surprised how many new members we could have after they see firsthand what B&PW can offer to them. Not only is it important to increase our membership but to maintain our valuable members. If you have members who did not rejoin; drop them a note letting them know they are missed. If you need a lapse list of membership, Millie Lotter, Database Manager, has sent a listing as of 9-12-2011 to your local President.

Please let me know if I can assist you in any way to help us reach our goal for this year. Let's all join forces to make a difference in our communities and commonwealth and make KFBPW the best it can be!

Professional Development

Bonny Manning, Chair

DON'T BE SCARED, BPW PREPARED!!!

The Kentucky Federation (KF) Professional Development Program (PDP) will help you get prepared and stay prepared.

Just as your company needs a company brand, a media kit, and an up-to-date set of officer photos, you, too, need a personal preparedness kit which includes these same items. Using the PDP 10-module series can translate into a "personal" preparedness kit with everything you need to get prepared and stay prepared. Each module is tailored for you and/or your company to stay current, up-to-date and ready for however the day unfolds.

Your personal preparedness kit will include:

- Your Personal Brand (Module 6)
- Your Personal Media kit (Module 9)
- Your Networking List. (Module 4)
- Also, is your bio/resume up-to-date?
- Does your work attire need a lift? (Module 9)
- Is your current behavior ready for future environments? (Module 2)
- What is your Leadership Style? (Module 7)

Here are a couple of websites to help you with details; www.bpw-by.org and www.CareerBuilder.com. And, of course, you can contact me, Bonny Manning at bonnyman@me.com or Phyllis Hargrave at uofl_fan@insightbb.com with any questions.

**And remember, DON'T BE SCARED,
BPW PREPARED!!!**

Public Relations

Phyllis Hargrave, Chair

How visible is your BPW Local in your community? How are you promoting your Local so everyone knows about you/us? Are you utilizing your local newspaper and other media? Are you letting everyone know about Business and Professional Women and all the good works we do? Here are some suggestions:

1. Don't wait for them to contact you. To get the word out on BPW, be proactive. Contact TV, radio, newspaper, college newspapers, websites and blogs. Tell your Facebook friends about BPW. Start your own blog.
2. Tell an interesting story. Think about the type of articles or stories that interest you. Chances are that same story interests a lot more people.
3. Make sure you continue to send out notices about BPW. One article may not get anyone's attention but if the media continues to see BPW info, you will get their attention.
4. Speak up! Don't be afraid to contact the media concerning BPW. They are always looking for interesting pieces to help them fill a paper or air time. BPW can be that item.
5. Keep a list of media contacts for easy reference. Be sure to pass them on to next year's PR Chair for your Local.

Good Public Relations helps your Local Organization grow membership.



Berea BPW

Zayda Flanery, President

Community representatives from the Bluegrass Chemical Stockpile near Richmond were our guest speakers at our September meeting. It was a very informative and reassuring presentation. The speakers clarified the process the government would be utilizing to render the weapons harmless and of no possible threat to the local community. One of the speakers was impressed with Berea BPW and requested to become a member!

Dr. Edith Baker, a member of Berea BPW, will be the guest speaker in October. She has published a book entitled "Sacred Tyrants" a history of social oppression and religious control which she will highlight at the meeting and do a book signing.

Our annual Rudolph auction will be conducted on December 6th at the Smokehouse Grill. Our flyer is in this Kentucky Cardinal. We were privileged to be a part of Berea's Quilt Show this year. We sold several quilt tickets. Several invitations have been sent to teachers inviting them to our meetings and we anticipate some positive results from our mailings. We welcome a new member, the principal of Berea Community School. Our meeting night has been changed from Wednesday nights to Tuesday nights and we anticipate an increase in our attendance.

Fort Harrod BPW

JoEtta Wickliffe, President

The Fort Harrod BPW organization is meeting the third Monday every other month until further notice.

Our programs thus far have been: Getting in Touch with One's Self and How to Manage Your Budget during These Economic Times. Our future programs will be: How to get the Media to Write and Accept your Organization's Activities, How to use Available Resources to Learn about Your Ancestors.

Even though we are small we are committed to the Mission of BPW and will continue to work to build our organization and help other women in our community.

Glasgow BPW

Betty Driver, President

The first quarter of the year has proven to be a very busy, but exciting time for our club. In July, our speakers gave us valuable information about the benefits of lifestyle changes through diet and exercise.

We kicked off our membership drive in August with a Hawaiian Luau at the home of Dr. Bharat Mody. Not only did we gain seven new members, but we were able to raise \$660 to benefit the Community Medical Care. Eight members met with Janet Johnson, from WPBM radio to tape four 6-minute sessions to showcase B&PW. Other activities in August included: a voter registration drive, Women's Equality Day celebration, and the "To The Brim" annual food drive manned by 24 ladies.

Georgia Beth Albany kicked off our Professional Development Program at our September meeting. Janet Johnson with WPBM Radio presented the module on "Media Presentations". The PDP program will continue each Tuesday night during the month of September with different speakers each week. We also held the 33rd annual Arts, Crafts & Gifts Fair on September 24 around the square in beautiful downtown Glasgow.

As you can see, our club projects will have a lasting impact on our community for many years.





Hopkins County BPW

Wanda Crowe/Nena Matheny, PR Co-Chairs

Hopkins County BPW members are pleased. Our organization has two Distinguished Young Women (formerly known as Junior Miss) to qualify as at-large participants at the 2012 Distinguished Young Women of Kentucky scholarship program in Lexington. Katie Gamblin is representing Hopkins County and BreAnna Hatler will represent Madisonville in January. The club has been working on building the Distinguished Young Women program in Hopkins County and this is a good beginning.

During the upcoming National Business Women's Week we look forward to recognizing the Business Equity recipient, Woman of Achievement, and Woman of the Year at our annual banquet and hopefully gain some new members at our Membership Event. Plus, as part of our celebration we will once again partner with Merle Norman Cosmetics in their 2nd annual Purses with a Purpose Vera Bradley Event. Gently used Vera Bradley purses and bags are traded in for a discount on new Vera products. Our members then sell the used purses to raise monies for the Hopkins County Health Department to pay for preventative Health Care for women who have no means to pay. This has been a very successful event and we anticipate helping many more women this year.

Paducah BPW

President Audrey B. Lee

Paducah Club started September with a full plate after a one month hiatus in August. First on the agenda was a review of the July Women Celebrating Women event which was an overwhelming success. Clubs across the country have asked for information on how to do such an event. It was moved to a larger locale but the club still had to turn away some vendors. Planning now has started on how to expand the program and get more scholarship money from it.

The club recognized President Audrey Lee, who was honored by the community as its Woman of the Year out of a field of 40 submissions. President Lee was Grand Marshall of a parade for Emancipation Day activities.

The club will again be donating canned goods to the Paducah Cooperative Ministry for its Thanksgiving and Christmas projects. Members have also signed up to partner with a local cosmetic salesperson for a scholarship fundraiser over the holidays.

Planning is going forward to recognize Business and Professional Women Week/Month in March. President Lee attended the Women's Conference in Minneapolis and will be giving a report at Interim Board.

Paducah River City BPW

Tammy Owen, President

The Paducah River City BPW and the Four Rivers Business Journal is excited about the 2011 Woman of Achievement award. The 16 finalists have been announced, and were featured in the October edition of the Four Rivers Business Journal, which published on September 22. The award luncheon will be held on Thursday, October 27 at noon, and hosted by the Paducah Convention and Expo Center. The award winner will receive a \$1,000 scholarship to be used toward training and development. Plans are underway for our annual Christmas Auction to be held December 13. A portion of the proceeds will be donated to the Merryman House. We would like to congratulate the Paducah Area Chamber of Commerce on being 2011 Chamber of the Year.

Somerset BPW

Sandy Stokley

The Somerset Business and Professional Women had their first official meeting of the year recently. Lisa Mullins with Wealth Care Advisors LLC spoke to the group and provided insight on the economic climate as well as advice on how to plan for our future.

We are very excited to announce our first annual CRUISE! That's right, approx 50% of our membership and two prospective members are boarding the Carnival Sensation in October. While onboard for three days, we hope to get to know each other better and continue to network. This is a fantastic opportunity for us to get away from our work and our family and focus on ourselves. As mentioned earlier, we hope to make this an annual trip.

After we return from our cruise, we will be hosting our annual fall fundraiser. Members have been asked to provide at least two new or gently used items for the live and silent auctions that will take place. We are hoping to raise a lot of money for some great causes!

2011 INTERIM BOARD

November 18th & 19th

at

Barren River Lake State Resort Park

1149 State Park Road

Lucas, KY 42156

**For more information please visit the KFBPW
web page at www.bpw-ky.org**

Interim Board Contact Chair, Betty Driver

215 Hidden Forest Road

Glasgow, KY 42141

E-mail: bbdriver@glasgow-ky.com

270-651-6477 or 270-590-8490

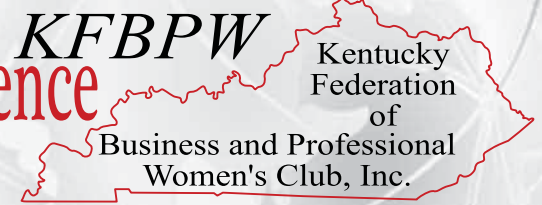
Suzanne Forshee

KFBPW PRESIDENT

2011-2012

2011. Interim Board of Directors Conference

November 18-19, 2011



Conference Registration Information

Registration is required for anyone attending any event scheduled as part of the Interim Board of Directors meeting. KFBPW name badges serve as your pass to conference activities and are distributed to registrants at the KFBPW registration desk.

You must be registered with the registration desk prior to 8:30 a.m. Saturday in order to vote. Only members of the Board of Directors who have paid their registration fee and are in good standing are eligible to vote in the business session. Members and guests are welcome to attend and speak, but cannot vote. Board members are:

- KFBPW Executive Committee
- KFBPW Parliamentarian (without vote)
- Chairpersons of Standing Committees
 - o Aspiring Professional - Cathy Hughes
 - o Bylaws - Beth Moore
 - o Finance - Brenda Gunn
 - o Issues Management - Donna Seeberger
 - o Legislation - Violet Clark
 - o Membership - Janis Turner
 - o Professional Development - Bonny Manning
 - o Public Relations - Phyllis Hargrave
- Regional Directors
 - Asst may serve as alternate in absence of Dir or if Dir is delegate in another capacity
- Local Presidents (2011-2012 year)
 - Authorized representative allowed
- Kentucky Cardinal Editor - Patti Fallin
- KY Foundation Board of Trustees Chair - Debrah Pierce
- Past National President - JoEtta Wickliffe
- Immediate Past State President - Janis Turner
- Emeritus Board Member - Ledean Hamilton

Early bird registration is available until October 18th. All registrations postmarked after October 18th must include a late fee of \$10.00.

REFUND POLICY

Cancellations must be made in writing to: Betty Driver, Interim Board Contact Chair, 215 Hidden Forest Road, Glasgow, KY 42141. For a full refund, cancellation requests MUST be postmarked no later than November 1, 2011. No refunds will be processed after November 1, 2011.

HOTEL RESERVATIONS

Reservations will be processed in order of receipt. THE ROOMS WILL BE BLOCKED UNTIL OCTOBER 18, 2011. Reservations beyond that date will be on a space and rate available basis. The room rate is \$71.95 per room per night for single or double. Rates DO NOT include the sales and occupancy tax.

Call the hotel directly at 270-646-2151 to make your room reservations. TO BE SURE YOU GET THE CONFERENCE RATE, IDENTIFY YOUR AFFILIATION WITH KFBPW.

SUGGESTED ATTIRE

Business attire is requested during the Friday seminars and workshops, and the business session on Saturday. Friday night's Foundation Fundraiser has a Monte Carlo theme so come dressed in costume to have fun!

Interim Board Overview Continued . . .

“MONTE CARLO NIGHT” - KENTUCKY BPW FOUNDATION FUNDRAISER

The Kentucky Business and Professional Women’s Foundation Board of Trustees invites all members to attend the Foundation’s Monte Carlo Night Event. The event will be held on Friday evening, November 18th at Barren River Lake State Resort Park in Lucas, Kentucky. Members of the Board of Trustees as well as the Franklin BPW will act as your hosts for the evening’s activities.

So....come prepared to “gamble” and have fun, see old friends and meet new ones while helping to raise money for scholarships. There will be a costume contest so come dressed in your best Monte Carlo themed attire. Each local is asked to bring either a Christmas themed gift basket or two (2) items for the auction. Start exercising your bidding arms today. We want to see them raised high and often. If you have questions about the auction please contact Debrah Pierce at 502-582-3056 or piercedv@aol.com.

INTERIM BOARD CONFERENCE HOTEL

Enjoy this beautiful, quiet and compact resort, conveniently located in south central Kentucky near Kentucky’s famous cave area, which includes Mammoth Cave National Park, the longest cave system in the world! Surrounded by rolling, tree-covered hills, the lodge overlooks the beautiful 10,000-acre lake. It features contemporary meeting space within proximity to the restaurant and lodging accommodations – all under one roof. Relax by day by watching the boats cruising the lake, while at night, the lights of the cottages surrounding the lake reflect off the quiet waters.

The lodge was built in 1972, renovated in 2007 and is three floors with step access. All guest rooms have an outside entrance and a balcony with either a lake or wooded view. There are 49 rooms with 2 queen beds and 3 rooms with a single king bed. There are also 22 two bedroom cottages available in the park.

All rooms are complete with hair dryers, irons and ironing boards. Other amenities include: soap, shampoo, and coffee pots with John Conti Bluegrass Blend Coffee. The lodge offer free wireless internet access from lodge public areas, lodge rooms and meeting rooms. Wireless does not extend to the cottages.

Barren River Lake State Resort Park is located at 1149 State Park Road, Lucas, KY 42156-9709; 15 miles southwest of Glasgow, 44 miles southeast of Bowling Green and 106 miles southwest of Louisville. Take Louie B. Nunn Cumberland Parkway - via Exit 43 on I-65 then take the US-31E Exit 11, toward Scottsville. Drive 11.2 miles - then turn RIGHT onto State Park Road. Follow the signs to the Lodge.

Tentative Meeting Agenda

Interim Board of Directors Meeting

November 18-19, 2011



Thursday, November 17, 2011

Executive Committee Meeting 7:00 p.m. - 9:00 p.m.

Friday, November 18, 2011

Kentucky BPW Foundation Meeting 8:00 a.m. - 11:30 a.m.

Registration 12:00 p.m. - 6:00 p.m.

Seminar - Communication 3:00 p.m. - 4:00 p.m.

Ask Your Leadership Team (One on One)..... 4:00 p.m. - 5:00 p.m.

Personal Development Training (2 modules)..... 5:00 p.m. - 7:00 p.m.

Dinner followed by BPW Foundation Event..... 7:30 p.m. - 9:30 p.m.

Saturday, November 19, 2011

Breakfast Buffet..... 7:00 a.m. - 9:00 a.m.

Registration 8:00 a.m. - 12:00 p.m.

Vendor Exhibits..... 8:00 a.m. - 12:00 p.m.

Business Session #1..... 9:15 a.m. - 10:45 a.m.

Mentoring/Membership Workshop 11:00 a.m. - 12:00 p.m.

*** Please note: All times are Central Standard Time ***

90th Interim Board of Directors

Registration Form

Barren River Lake State Resort Park ♦ Lucas, Kentucky ♦ November 18 - 19, 2011
Please type or print; use one form for each registrant.

Name _____ Phone _____

Address _____ City/State _____ Zip _____

E-mail _____ BPW Local _____

Check your classification/Board of Directors/voting status (*check all that apply*)

<input type="checkbox"/> KFBPW Executive Committee	<input type="checkbox"/> Current Local Organization President
<input type="checkbox"/> KFBPW Standing Committee Chair	<input type="checkbox"/> Other State Board Member _____
<input type="checkbox"/> Committee: _____	<input type="checkbox"/> Past State President & Year Served _____
<input type="checkbox"/> Regional Director	<input type="checkbox"/> Member
<input type="checkbox"/> Assistant Regional Director	<input type="checkbox"/> Guest
<input type="checkbox"/> First Time Attendee at Interim Board	<input type="checkbox"/> New Member

Registration Packages: NO REFUNDS WILL BE PROCESSED AFTER NOVEMBER 1, 2011

**Payment must be received with the registration form.
 If not received, late payment will be accessed.**

Full Conference Package

(Includes Friday Communications Seminar, Professional Development Training, Friday Night Dinner prior to Foundation Fundraiser, Saturday Breakfast Buffet, Saturday Board of Directors Meeting, and Mentoring & Membership Workshop)

Postmarked on or before October 18, 2011	Postmarked after October 18, 2011
---	--

\$ 55.00	\$ 65.00
----------	----------

Saturday-Only Conference Package

(Includes Saturday Breakfast Buffet, Saturday Board of Directors Meeting, and Mentoring & Membership Workshop)

\$ 35.00	\$ 45.00
----------	----------

Registration Only - No Meals

(Includes Friday Communications Seminar, Professional Development Training, Friday Night Foundation Fundraiser Event (no dinner), Saturday Board of Directors Meeting, and Mentoring & Membership Workshop)

\$ 25.00	\$ 35.00
----------	----------

Additional Guest Meals:

Friday Dinner at Foundation Fundraiser
 Saturday Breakfast Buffet

\$ 20.00
\$ 15.00

Total Enclosed: _____

Payment must be received with the registration form. If not received, late payment will be accessed.

Special meals (vegetarian, etc.) are available upon request. Please state preference. _____

I will be attending: *Please Note Barren River Resort is located in the Central Time Zone*****

<input type="checkbox"/> Friday Seminar - Communication through Change	<input type="checkbox"/> Saturday Luncheon
<input type="checkbox"/> Friday Workshop - Professional Development Training	<input type="checkbox"/> Saturday Board of Directors Meeting
<input type="checkbox"/> Friday Night Dinner	<input type="checkbox"/> Saturday Workshop - Membership & Mentoring
<input type="checkbox"/> Friday Foundation Fundraiser	

Mail completed registration form and payment promptly by deadline date listed above (*keep a copy for your records*).
 Make check payable to **KFBPW**. Send check and form to: **Betty Driver, 215 Hidden Forest Road, Glasgow, KY 42141**
Please mark outside envelope: ATTN: KFBPW Please direct any questions to: **bbdriver@glasgow-ky.com** or call **270-651-6477**
 or **270-590-8490**

Hotel reservations must be made directly with Barren River Lake State Resort by October 18, 2011, to receive the discounted rate
 Telephone 270-646-2151. **Rates \$71.95** - for a single or double (plus tax) **Identify your affiliation with KFBPW for group rates.**



**ANNUAL
RUDOLPH AUCTION**

Sponsored by:

**BEREA BUSINESS &
PROFESSIONAL WOMEN**

Smokehouse Grill

Tuesday, December 6, 2011

Dinner Optional \$11.00 Adult \$5.00 Child

From 6:00 to 7:00 P.M.

Auction 7:00 to 9:00 P.M.

EVERYONE INVITED

RSVP to Mary Miller

(859) 625-9607

All Proceeds benefit BPW Scholarship Fund and other charities.



Glasgow B&PW Honors Four Charter Members with a Scholarship

Over half a century ago, 115 business and professional women met to plan for the organization of the Glasgow Business and Professional Women's Club which became chartered October 6, 1955 by the Bowling Green Club. At that time no other club had been chartered with so large a membership. Beulah Nunn was elected president. Only four of those members persevered until today: Ann Rodgers, the 4th president, Willa Taylor, Norma Redford and Pearl Greer. Each was active in the club's first project of the beautification of the North Jackson Highway with the planting of over 6000 seedlings. And today, each voice is heard even by those who attend meetings only selectively. Norma was elected almost immediately to BPW state secretary and later as president and almost on every committee of her club.

Pearl Greer, a florist, was always ready with flowers when decorating called, and when the special bean soup luncheon fundraisers were held each autumn, she could be seen at the dessert table serving homemade goodies from the kitchen of both her and others.

Willa's contributions have been many and varied but most remembered in her efforts to organize the Younger Women's BPW club, the second BPW club in Glasgow. Ann was president in 1958 - 59 when the membership increased by 20%. Hers was a very productive year when the club purchased a defibrillator with built in synchronizer, crash cart, and related equipment for T. J. Samson Hospital emergency room. Also, the club donated \$1,000.00 toward the purchase of a Fetal Monitoring Machine.

Space does not allow the dollar values only of this club to community development but it surely exceeds over \$500,000.00. No price can be put on the work Glasgow BPW Club has, and still continues, for work to better the lives of working women. In order to pay honor to these four ladies, Glasgow BPW Club will be awarding four \$350.00 scholarships in the month of September to WKU (Glasgow Campus) students.

Hopkins County B&P Local Businesses



Hudson

TOYOTA • CHRYSLER • DODGE • JEEP
www.HudsonHealt.com

Algia Morrow

1055 Crossing Place
Madisonville, KY 42431

(270) 821-3372
(800) 549-3637
FAX (270) 821-4856

OLD NATIONAL BANK

Your bank. For life.

Denise B. Young
Vice President
Associate since 1981

501 Hospital Drive, P.O. Box 340
Madisonville, KY 42431

T: 270.824.4112
C: 270.836.4539
F: 270.824.4101
denise.young@oldnational.com

oldnational.com

Glema Mahr Center for the Arts

Madisonville Community College

www.glemacenter.org

Lana J. Moore Volunteer



1986 Lakeview Drive
Madisonville, KY 42431
Phone: (270) 824-9985
Email: lanajmoore@live.com

Motor Carrier Secure Solutions, LLC

Sonia Sanders

Owner/Consultant

Phone: 270-452-9028



Our DRIVE keeps you DRIVING

Nena Matheny
Senior Administrative Assistant
Advancement/Development Office



2000 College Drive
Madisonville, KY 42431
Phone: (270) 824-8595 Fax: (270) 824-8642
Email: nena.matheny@kctcs.edu
www.madisonville.kctcs.edu

Kentucky community & technical college system

Platform Perfection, LLC.



Tammy A. Melendez-Sanders
Pageant Consultant & Production Specialist
121 Genevieve Dr.
Madisonville, KY 42431

Phone (270) 871-4429

Email: tammysanders@newwavecomm.net



TERESEA HATLER
BC-HIS,ACA

Hearing Solutions
614 East Arch, Suite A
Madisonville, Ky. 42431
270-824-8288
Cell 270-584-5572
thatler1@hotmail.com



Your Touchstone Energy® Cooperative

Patti Fallin
Drafter

201 Third Street (42420)
P.O. Box 24
Henderson, KY 42419-0024
www.bigrivers.com

270-844-6009
fax 270-844-6023
patti.fallin@bigrivers.com



Sharon S. Smith
Owner

226 Madison Square Drive
Madisonville, Kentucky 42431
(270) 821-4519
(800) 821-4518

www.merlenormanstudio.com/mn-7116

Independently owned and operated



Barclay B. McCoy
President

McCoy & McCoy Laboratories, Inc.

PO Box 907, 825 Industrial Road
Madisonville, KY 42431
Ph. 270/821-7375 Fax 270/825-9200
Email: b.mccoy@mccoyslabs.com
www.mccoyslabs.com



Wanda Crowe
Account Executive
WYMV • WWKY • W TTL

P.O. Box 1310
Madisonville, KY 42431
wcrowe@commonwealthbroadcasting.com

Phone 270.821.1310
Fax 888.531.6397
Cell 270.452.1418




BERRY & KINGTON, PSC
CERTIFIED PUBLIC ACCOUNTANTS

JANET R. BERRY
CERTIFIED PUBLIC ACCOUNTANT
CERTIFIED INFORMATION TECHNOLOGY PROFESSIONAL
CERTIFIED FRAUD EXAMINER

2822 North Main Street
Madisonville, KY 42431
Email: jberry@berryandkington.com

Phone: 270-821-3355
Fax: 270-821-0101

Licking Valley B&PW Local Businesses



**Native American
POW-WOW**

**SATURDAY, OCTOBER 7
SUNDAY, OCTOBER 8
9:00 A.M.**

**Cynthiana Elks Lodge
1544 US Highway 62E
Cynthiana, KY 41031**

\$5.00 Adults; \$3.00 Senior Citizens & 12 & under; 6 & under free
For more information call 859.289.5164 or www.PowWow.com



WARE FUNERAL HOME
Tom and Polly Ware
www.warefuneralhome.com

(859) 234-4000
P.O. Box 610
846 U.S. Hwy 27 N.
Cynthiana, KY 41031

24 Hr. Obituary Information
(859) 234-5777
Fax (859) 234-4093
E-mail pware1@bellsouth.net

Teabeary Treasures
"A Treasured Gift for any Occasion"
Laura Brogli Palmer

108 South Main Street
Cynthiana, Kentucky 41031

(859)508-0321
teabeary@setel.com



Christy Winkle, Owner
Corner of Bridge & Church Street
Cynthiana, Ky 41031
Become a fan on facebook today !!
(859) 338-2937
"Creating Smiles Across the WORLD, one
Friend At A Time."



Kentucky Bank
PARTNERING FOR
Success!

Pam Slone
Market President
939 US Hwy 27 S
Cynthiana

*In Loving Memory
of
Hildreth England Whitaker
June 18, 1912 - August 7, 2011*



*Charter Member of the Cynthiana/Harrison County
Business and Professional Women*

HMH
Harrison Memorial Hospital

Martha Sullivan
IS Director

1210 KY Highway 36 E
Cynthiana, Kentucky 41031
Tel 859.235.3535
Fax 859.235.3699
msulliva@hmhosp.org

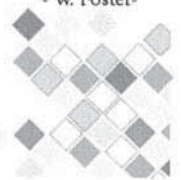
**Mark A. Sadler
Trucking, LLC.**

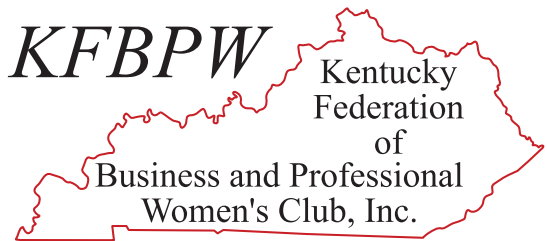
Mark & Tomi Sadler

2372 US Highway 62 West
Cynthiana, KY 41031

Office: (859) 234-2223
Mark Cell : (859) 983-5069
Tomi Cell: (859) 298-0459
sadlertrucking@yahoo.com

"Quality Is Never An Accident."
- W. Foster-





2729 B Green River Road
Henderson, KY 42420
Address Service Requested

2011-2012 Calendar of Events

October

All Month Breast Cancer Awareness and Domestic Violence Awareness Month

- 17-21** National Business Women's Week
- 29** KFBPW Executive Committee meeting (Conference Call)
- 31** Deadline for BPW/KY Foundation Scholarship Application

November

- 1** Deadline for KY Nominations Chair to notify locals of February 15 deadline
- 8** Election Day
- 17** Executive Committee Meeting, Barren River Lake State Resort Park, Lucas, KY
- 18-19** KFBPW Interim Board of Directors Meeting, Barren River Lake State Resort Park, Lucas, KY

December

- 1** Kentucky Cardinal deadline
- 1** Deadline for proposed Bylaws revisions to State Bylaws Chair

THE
KENTUCKY
KCARDINAL
KENTUCKY FEDERATION OF BUSINESS & PROFESSIONAL WOMEN'S CLUB, INC.